

POUDRE TECH METROPOLITAN DISTRICT

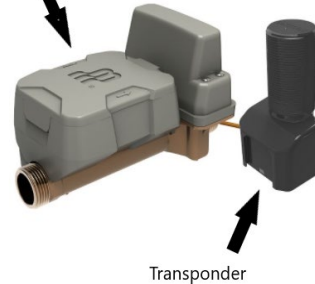
NON-POTABLE IRRIGATION WATER METER READING

If a non-potable irrigation water meter has been installed on your property, you are able to monitor usage per the digital reading on the meter. This will help you track much water is being used throughout the season.

- The non-potable irrigation water meter is located within the meter pit, typically found in the back yard. You may need pliers or another tool to help open the lid.



Non-potable Water
Meter located in meter pit



- The meter's digital reading tracks how many gallons of water that passes through the meter. You may consider taking a picture of this number at the beginning of each season.



- The Transponder is connected to the meter and sends the usage data to our meter reading software.

